

[Click here for video link](#)

## MODULE 8 L02

# Histological Layers of Digestive Tract

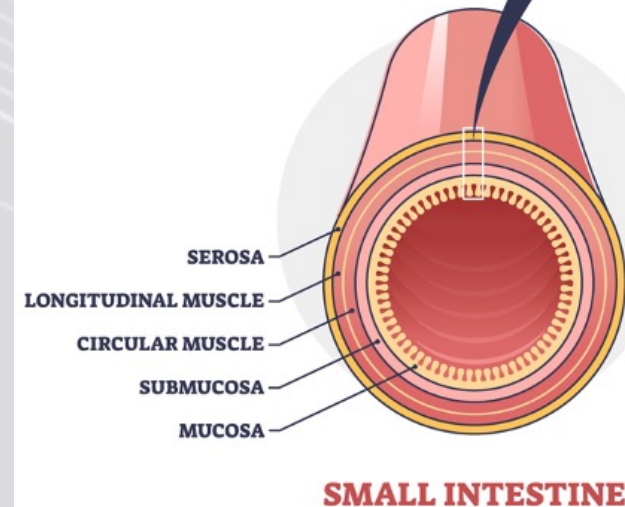
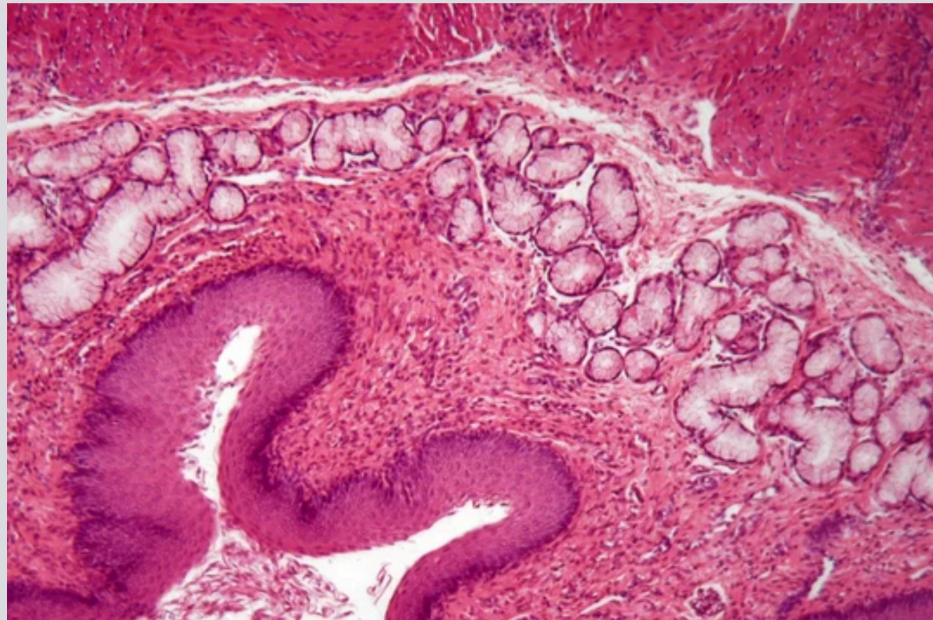
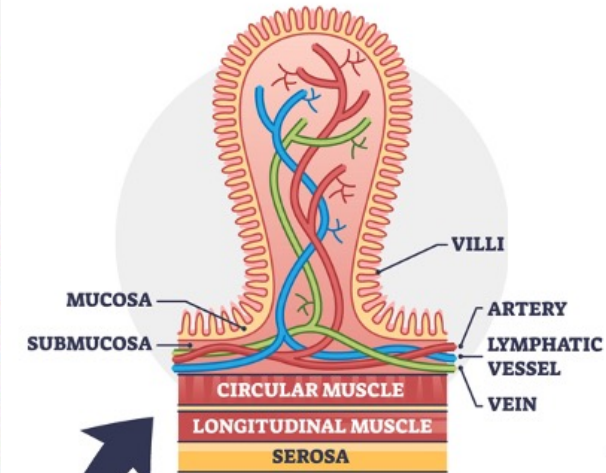
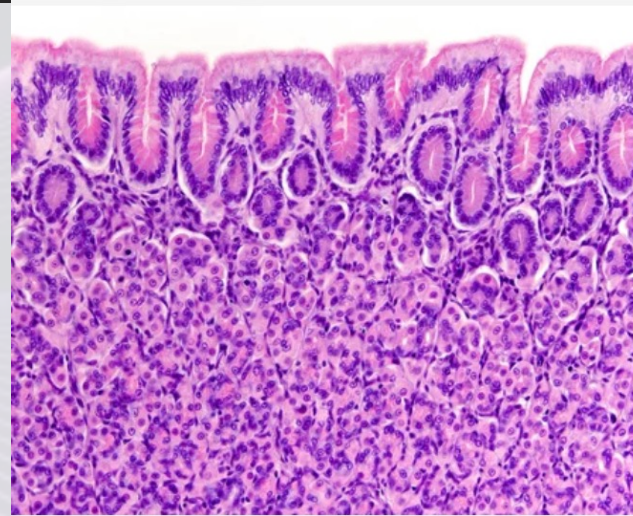
Dr. Lisa Brinn

[lbrinn@fiu.edu](mailto:lbrinn@fiu.edu)



# 2) Digestive Tract Layers

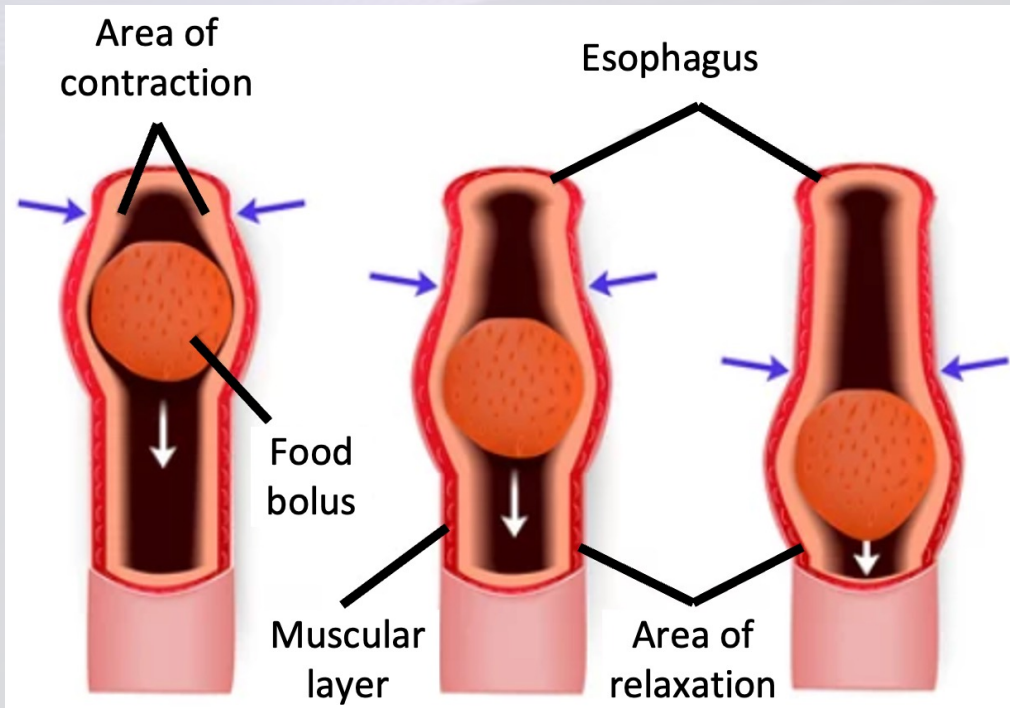
- Mucosa
  - ❖ Simple columnar epithelium
  - ❖ Stratified squamous epithelium
  - ❖ Organized into plicae
- Submucosa
- Muscularis externa
- Serosa



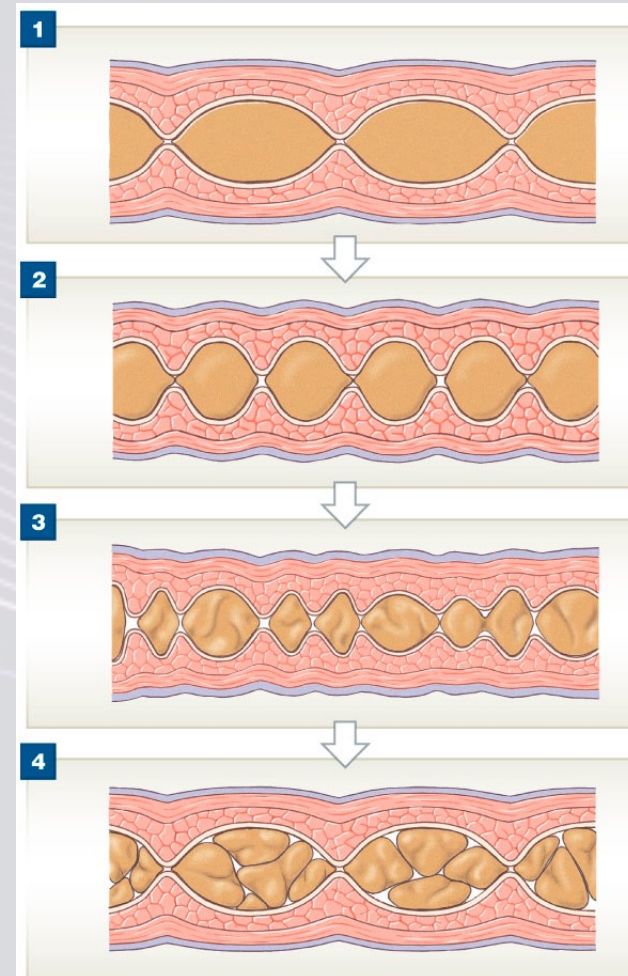


# Peristalsis and Segmentation

## Peristalsis



## Segmentation



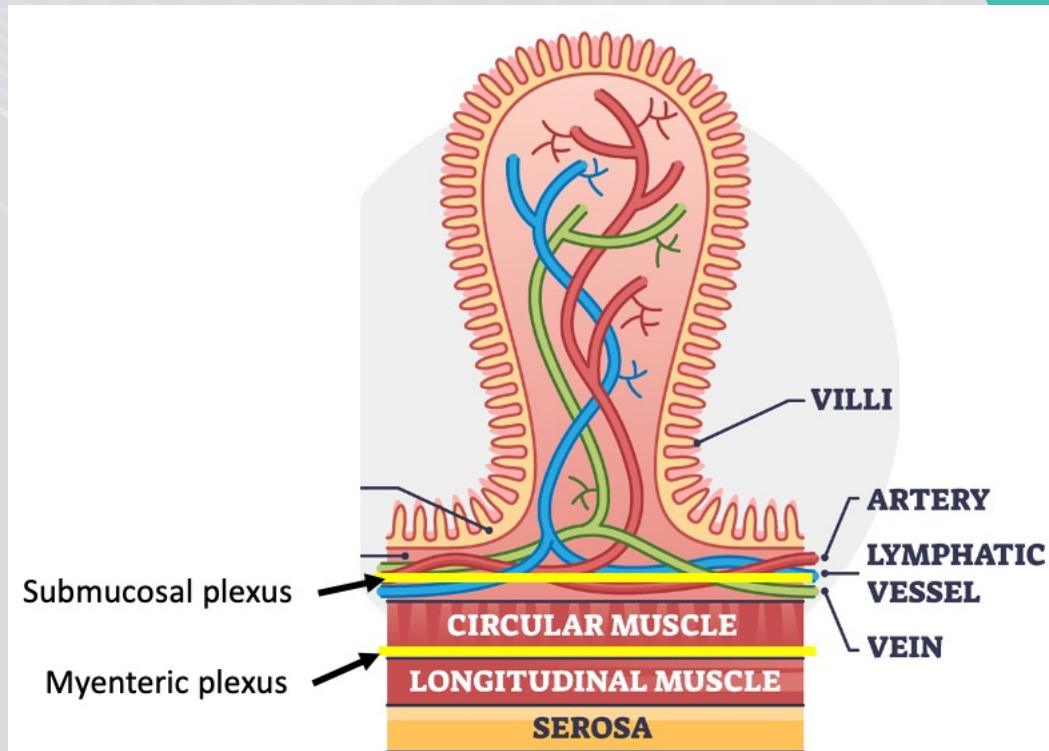
# Neural Control

- Mechanoreceptors
  - ❖ Mechanical stimuli
- Chemoreceptors
  - ❖ Chemical stimuli
- Osmoreceptors
  - ❖ Osmotic stimuli

Appropriate reflex → digestion

Gland activation

Muscle stimulation



# Hormonal Control

- Gastrin
  - Secretin
  - Bicarbonate ions
  - Cholecystikin (CCK)
  - Gastric inhibitory peptide
- } Secreted by endocrinocytes



Target organs